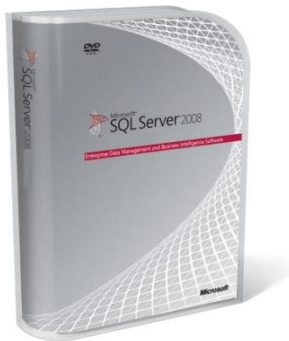




Microsoft® SQL Server® 2008 Reporting Services



Microsoft® SQL Server® 2008 Reporting Services provides a complete, server-based platform designed to support a wide variety of reporting needs enabling organizations to deliver relevant information where needed across the entire enterprise.

<http://www.microsoft.com/sqlserver/2008/en/us/reporting.aspx>

TOP NEW FEATURES

- Design reports with any structure by using the new unique layout capabilities of Tablix.
- Benefit from enhanced performance and scalability to reach all users throughout the enterprise.
- Render reports into Microsoft Office Word format.
- Integrate Reporting Services with Microsoft Office SharePoint® Services for central delivery and management of business insight.
- Create reports with richly formatted text.
- Display data graphically with enhanced visualization capabilities.

AUTHORING

Create comprehensive, richly formatted reports quickly and easily.

Use a comprehensive report design environment

Benefit from increased productivity through familiar Microsoft Visual Studio®-based report development tools. Take advantage of intuitive design interfaces and wizards to quickly build reporting solutions.

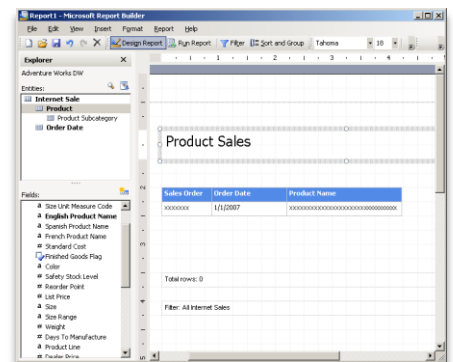
Create reports from a wide range of data sources

Build reports from different data sources throughout your enterprise. Data sources can be from SQL Server, Oracle, DB2, SAP NetWeaver BI, Hyperion Essbase, and others.

Enable report authoring for business users

Enable business users to create their own reports and explore corporate data by using Microsoft Report Builder 2.0, an intuitive and familiar Microsoft Office-optimized authoring environment. Report Builder 2.0 enables users to either

go directly against relevant data sources or to leverage a user-friendly semantic report model, empowering them to build reports without deep technical understanding of the underlying data structures. Build semantic report models from SQL Server Relational and Analysis Services databases, and from Oracle databases to support end-user reporting.



Report Builder

Choose from flexible data representation options

Format reports in the way that makes most sense for your particular reporting needs.

Use a tabular format for fixed data reports and Matrix format for dynamic crosstab reports; or combine the two formats by using the new highly innovative data representation format of Tablix

Apply rich formatting to your reports

Use the new richly formatted text capabilities to create text boxes containing mixed styles, paragraphs, and hyperlinks. Use expressions to implement inline formatting of your data.

Visualize data

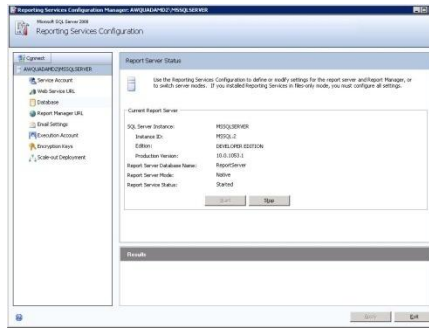
Enrich reports by visualizing data graphically, leveraging a wealth of new rich gauge and charting capabilities. Take advantage of additional chart enhancements including annotations, custom color palettes, scale breaks, merged charts, and multiple axes.

MANAGEMENT

Ease management of your reporting environment with a variety of powerful manageability tools.

Use comprehensive management tools

Schedule report execution, manage report subscriptions, and control access to reports through the Web-based Report Manager or integrate Reporting Services with Microsoft SharePoint Technologies for central manageability of reports in a familiar Office environment. Deploy and manage all of your Reporting Services configuration options by using Reporting Services Configuration Manager.



Reporting Services Configuration Manager

Secure your reporting solution

Use the Reporting Services role-based security model to secure access to reports, folders, resources and shared data sources. Grant access to users by assigning them to built-in and custom role definitions.

Customize management operations

Use the extensible architecture and open interfaces to integrate reporting solutions in diverse IT environments.

DELIVERY

Deliver richly formatted reports to users through a variety of mechanisms.

Achieve high-performance report processing

Deliver reports more efficiently with the re-engineered report engine. Limit memory usage and conflicts with non-memory bound reports. Optimize report performance with on-demand processing and instance-based rendering.

Render reports to a wide range of formats

Reach users across the organization with reports rendered

in the format that makes the most sense for them. Rendering options offer a variety of formats including HTML, PDF, CSV, XML, and Image (TIFF) as well as Microsoft Office Word and Excel.

Deliver reports automatically through subscriptions

Use subscriptions to deliver reports at a specific time and/or location. Deliver reports through e-mail or post them to a shared folder on your network. Enable business users to subscribe to reports, or create data-driven subscriptions to centrally manage automatic multi-recipient report delivery.

Embed reports into applications and portals

Use the Microsoft Report Viewer controls in Visual Studio to embed reports directly into your business applications or leverage the Report Viewer Web Server control to host reports in ASP.NET projects.

Publish reports to a Microsoft Office SharePoint report library or embed reports directly into portals by using the Reporting Services Report Viewer Web Part for renderings within SharePoint.



Embedded reporting in Microsoft Office SharePoint Services

For more information about Microsoft SQL Server 2008, visit <http://www.microsoft.com/sqlserver/2008/en/us/default.aspx>. For the latest developer news and more information on Microsoft's broad range of resources for developers, including support programs, events, training, and the MSDN Library Online, visit MSDN Online at <http://msdn.microsoft.com/>.

This data sheet is for informational purposes only. MICROSOFT MAKES NO WARRANTIES, EXPRESS OR IMPLIED, IN THIS SUMMARY.

The example companies, organizations, products, domain names, e-mail addresses, logos, people, places, and events depicted herein are fictitious. No association with any real company, organization, product, domain name, e-mail address, logo, person, place, or event is intended or should be inferred. (Use this only if fictitious content appears.)

0308 Part No. 098-00000 (color)
Part No. 098-00000 (black and white)

